

1 Minimum system requirements

Operating system	32 bit version of: <ul style="list-style-type: none">▪ Windows 2000 SP4▪ Windows XP Professional SP2▪ Windows Vista Business / Enterprise / Ultimate▪ Windows 7 Professional / Ultimate / Enterprise 64 bit version of: <ul style="list-style-type: none">▪ Windows 7 Professional / Ultimate / Enterprise
RAM	Windows 2000 / Windows XP: 512 MB Windows Vista, Windows 7: 1024 MB
Storage capacity	Program: 500 MB Data: 1 GB (for about 5000 determinations)
USB ports	for devices with USB interface
Screen	Resolution 1024 x 768

The windows user must have administrator rights in order to be able to install the **tiBase** software.

Additional requirements for the **tiBase server**:

Operating system	32 bit version of: <ul style="list-style-type: none">▪ Windows 2000 SP4▪ Windows XP Professional SP2▪ Windows Vista Business / Enterprise / Ultimate▪ Windows 7 Professional / Ultimate / Enterprise▪ Windows 2000 Server▪ Windows Server 2003▪ Windows Server 2008▪ Windows Server 2008 R2 64 bit version of: <ul style="list-style-type: none">▪ Windows 7 Professional / Ultimate / Enterprise▪ Windows Server 2008 R2
-------------------------	---

Network	10 Mbit/s, stable and permanent Communication via TCP/IP
----------------	---



Caution

During a determination data loss may occur when the PC switches over to the standby mode. In the energy settings of the operating system the **standby mode** should therefore be **deactivated**.

2 Single workplace installation

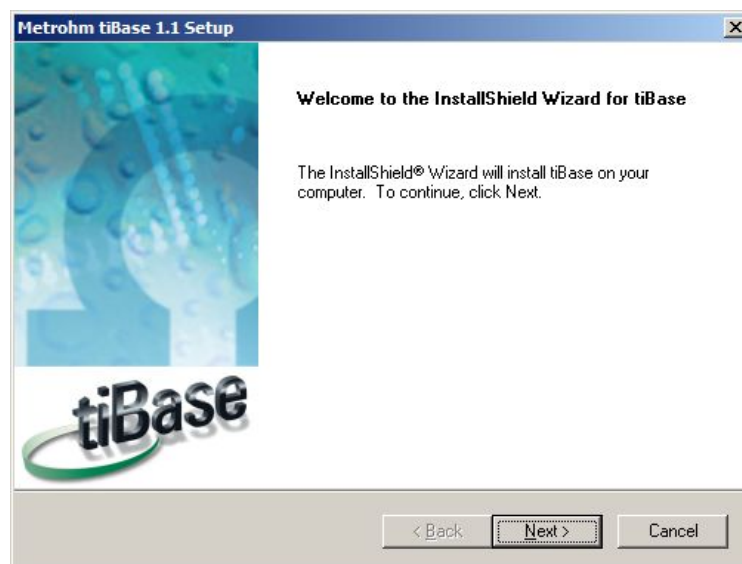
With the single workplace version **tiBase full** the workplace and database will be installed on your computer.

- 1 On inserting the CD into the drive of your computer the installation will be started automatically. If this option is deactivated on your computer, double click the file **setup.exe**.

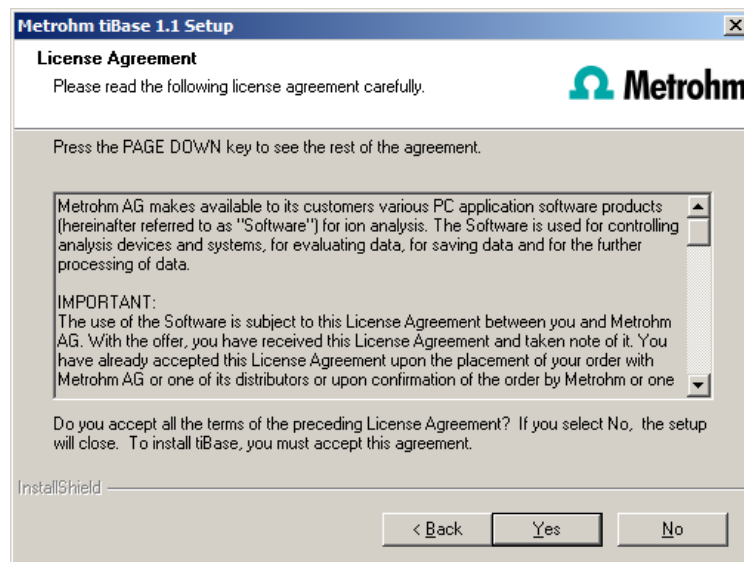
If the minimum system requirements are not met (see above) a message appears. Click on **[Yes]** if you like to install the program nonetheless.

Afterwards, click on **[Next]**.

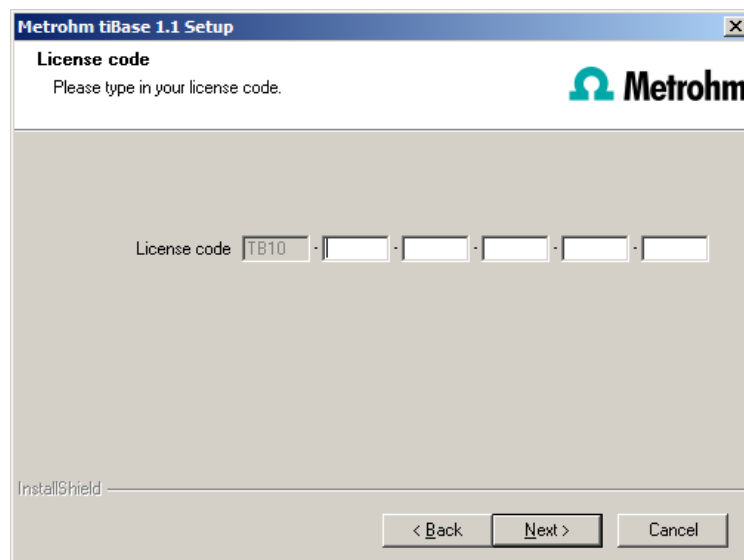
- 2 During the installation process, the Welcome screen appears first. Click on **[Next]** to install the software.



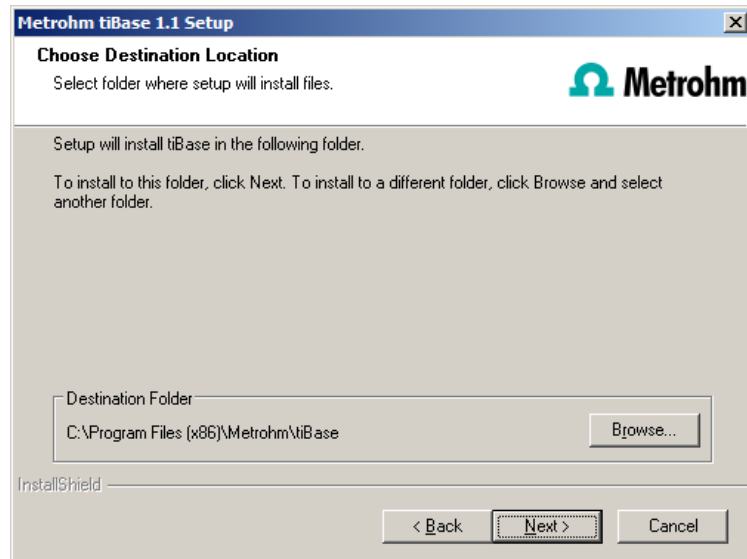
- 3 After having read the license agreement for **tiBase** and accepted it with **[Yes]**, a window will appear where you can enter the license code.



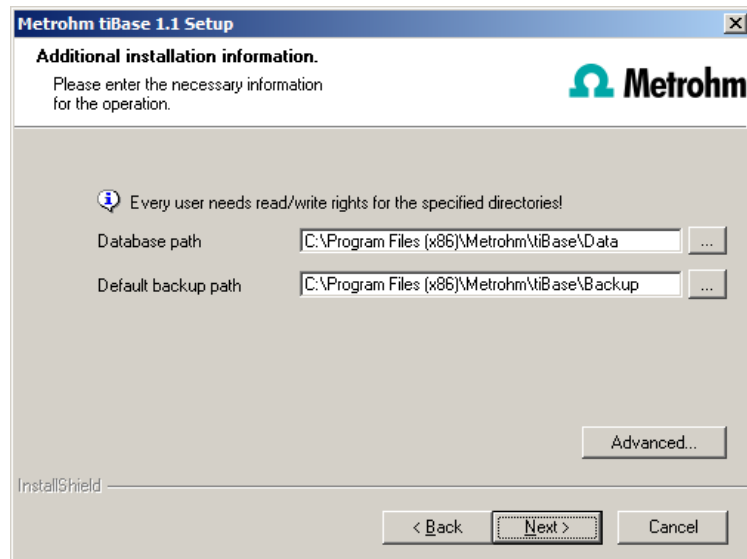
- 4 Enter the license code for **tiBase full** and click on **[Next]**.



- 5 Now confirm the target folder for the **tiBase** installation with **[Next]** or select a different target folder with **[Browse...]**.



- 6 In the dialog window **Additional installation information** you can define the paths for the database and backup files:

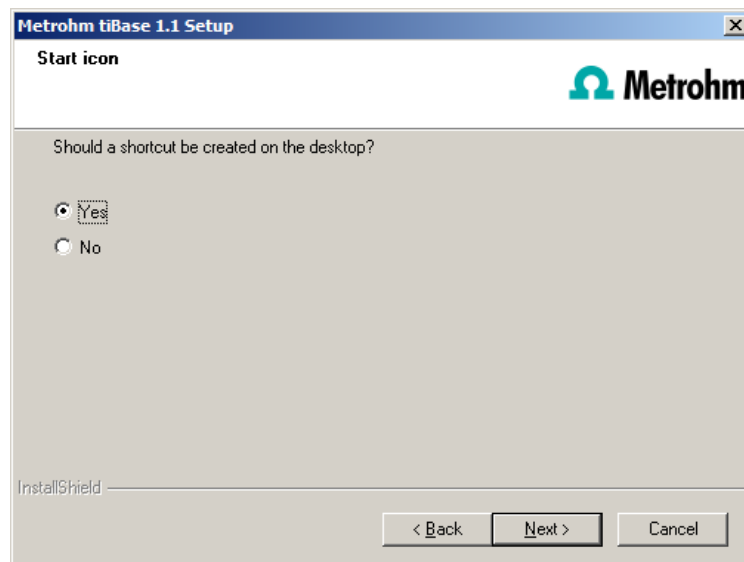


Note

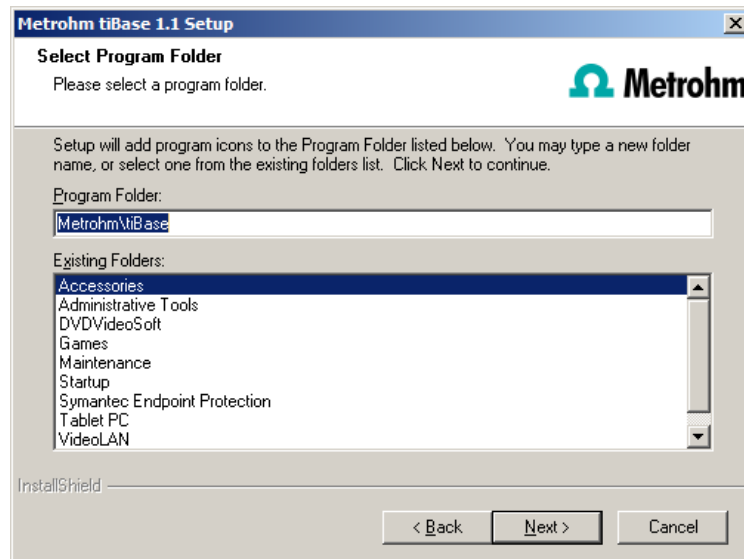
The default paths are different for Windows 2000, Windows XP, Windows Vista and Windows 7.

With the button **[Advanced...]** the ports **tiBase** uses to communicate with the database and administration server can be modified. If the ports are already used, an appropriate error message will appear. Ask your system administrator for more information about this. Continue with **[Next]**.

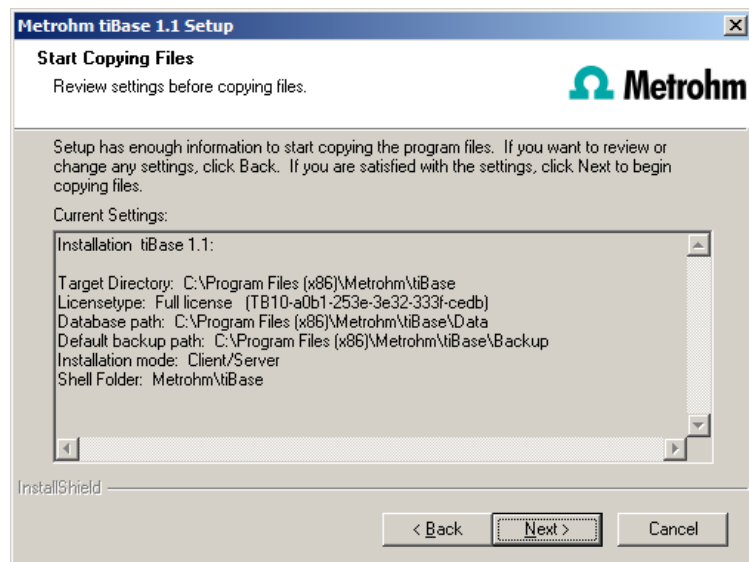
- 7 If you would like to create a shortcut on your desktop to start the **tiBase** software, activate **[Yes]** and then click **[Next]**.



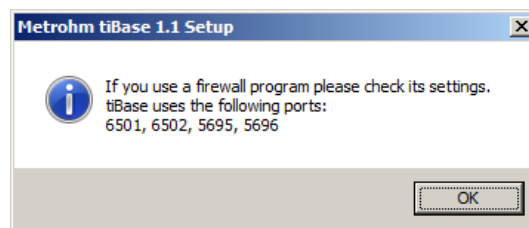
- 8 In normal cases, you can confirm the selection of the program folder by clicking **[Next]**.



- 9 The installation settings can now be checked. Start the copy process with **[Next]**.

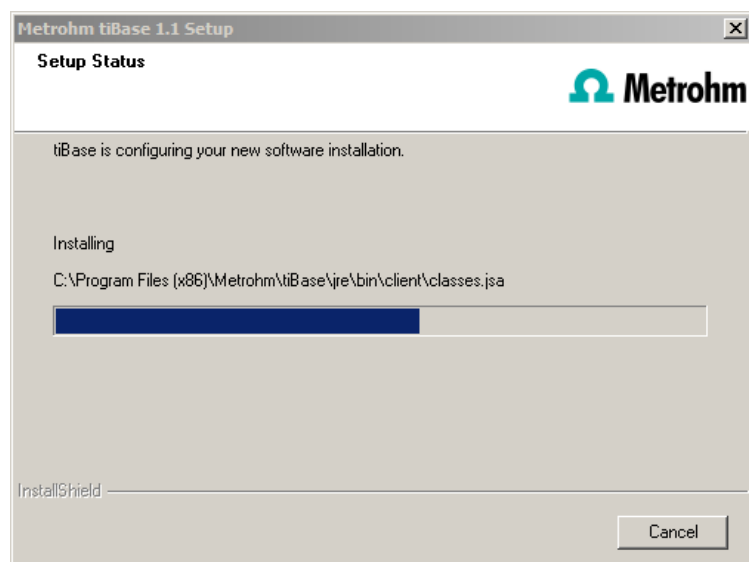


- 10 During the installation of **tiBase** the following message appears:

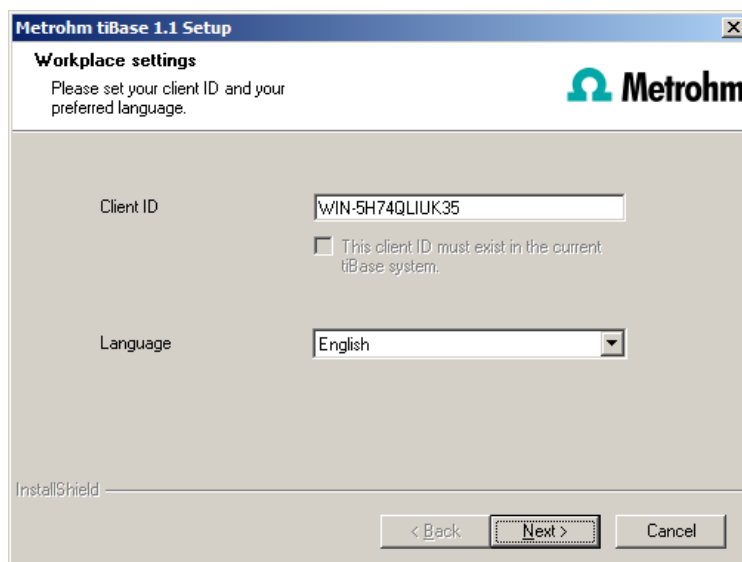


This message points out which ports **tiBase** uses. Write down these ports and inform your system administrator in case **tiBase** is not able to connect to the database. Confirm the message with **[OK]**.

- 11 **tiBase** will now be installed.



- 12 As soon as the copying procedure has been finished you can set further workplace settings:

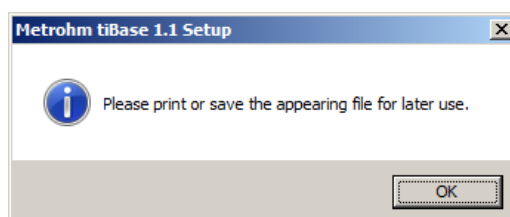


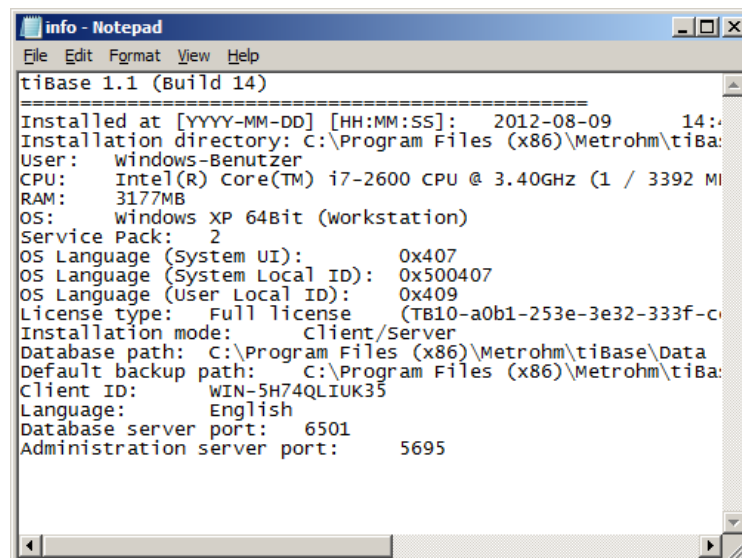
The option **This client ID must exist in the current tiBase system** is only selectable if a database from a previous installation already exists on your computer or if you want to connect to a database server which has been installed on another computer.

If you activate this option, then **tiBase** checks whether the identifier you have entered exists in the database. If this is true the identifier and all associated settings will be adopted. With this option reinstalling a client is much easier.

Click on **[Next]**. If the database ports are not available, an appropriate error message will appear and the installation will be canceled. In this case, check your server and firewall settings before installing the program again.

- 13 At the end of the installation, the file **info.txt** will be created which contains all relevant information concerning your current **tiBase** installation. Save this file on your hard disk in case of need in future and print it (add to IQ).





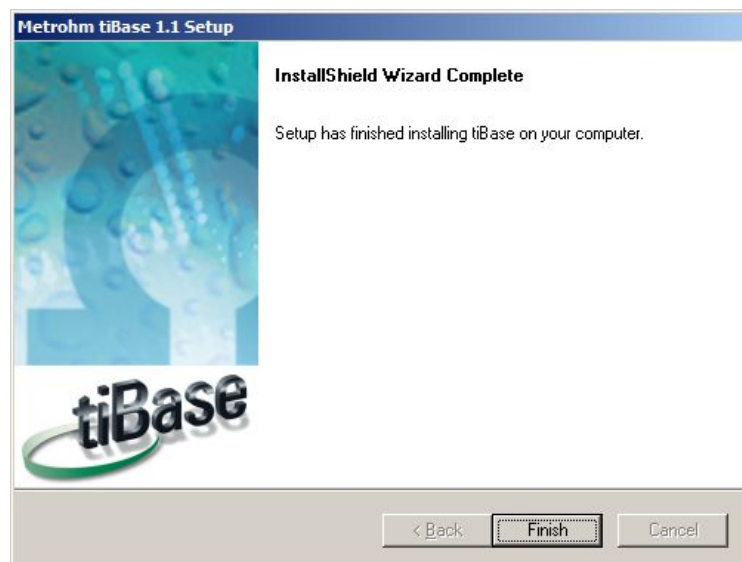
```
info - Notepad
File Edit Format View Help
tiBase 1.1 (Build 14)
=====
Installed at [YYYY-MM-DD] [HH:MM:SS]: 2012-08-09 14:00
Installation directory: C:\Program Files (x86)\Metrohm\tiBa
User: windows-Benutzer
CPU: Intel(R) Core(TM) i7-2600 CPU @ 3.40GHz (1 / 3392 M
RAM: 3177MB
OS: windows XP 64Bit (workstation)
Service Pack: 2
OS Language (System UI): 0x407
OS Language (System Local ID): 0x500407
OS Language (User Local ID): 0x409
License type: Full license (TB10-a0b1-253e-3e32-333f-c
Installation mode: Client/Server
Database path: C:\Program Files (x86)\Metrohm\tiBase\Data
Default backup path: C:\Program Files (x86)\Metrohm\tiBa
Client ID: WIN-5H74QLIUK35
Language: English
Database server port: 6501
Administration server port: 5695
```



Note

An **InstallLog** file can be found in the installation directory of **tiBase** under ...bin\InstallLog. It contains a listing of all files copied to your computer during the installation and a confirmation that the installation has been successfully completed.

- 14 Complete the installation with **[Finish]**.



3 Client-server installation

With the **tiBase multi** version (client-server version with 3 licenses) you can select during the installation whether you want to install a **client** (workplace) or the **server** (incl. client) on your computer.

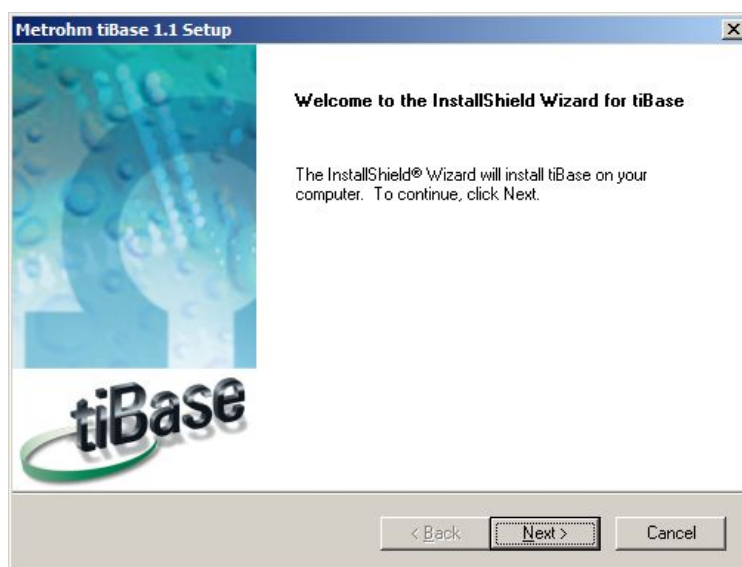
If you want to install a client only on your computer, a server, to which the client will be connected, must have been previously installed on another computer.

- 1 On inserting the CD into the drive of your computer the installation will be started automatically. If this option is deactivated on your computer, double click the file **setup.exe**.

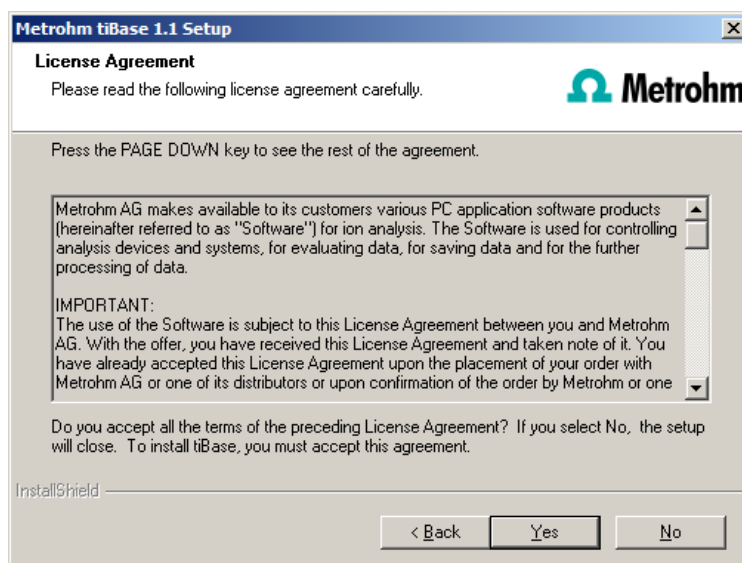
If the minimum system requirements are not met (see above) a message appears. Click on **[Yes]** if you like to install the program nonetheless.

Afterwards, click on **[Next]**.

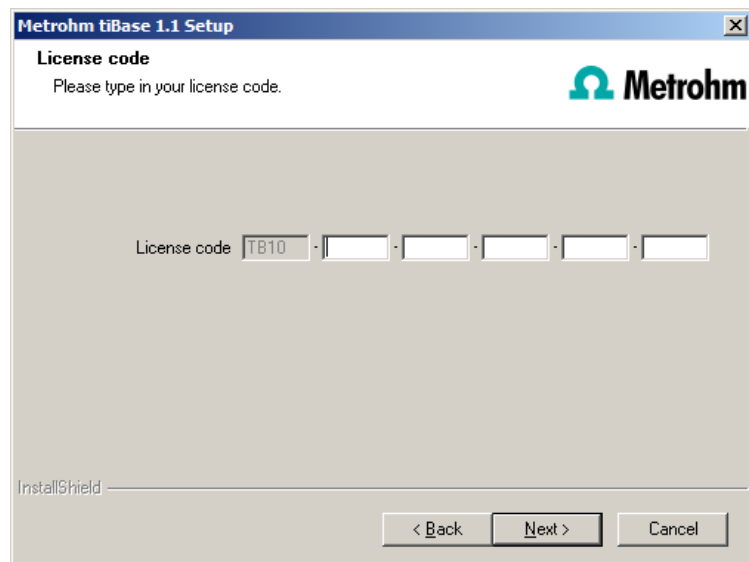
- 2 During the installation process, the Welcome screen appears first. Click on **[Next]** to install the software.



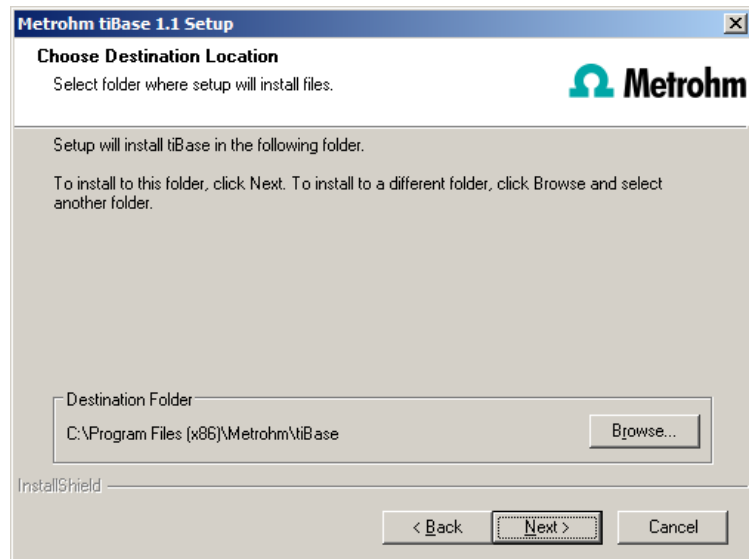
- 3 After having read the license agreement for **tiBase** and accepted it with **[Yes]**, a window will appear where you can enter the license code.



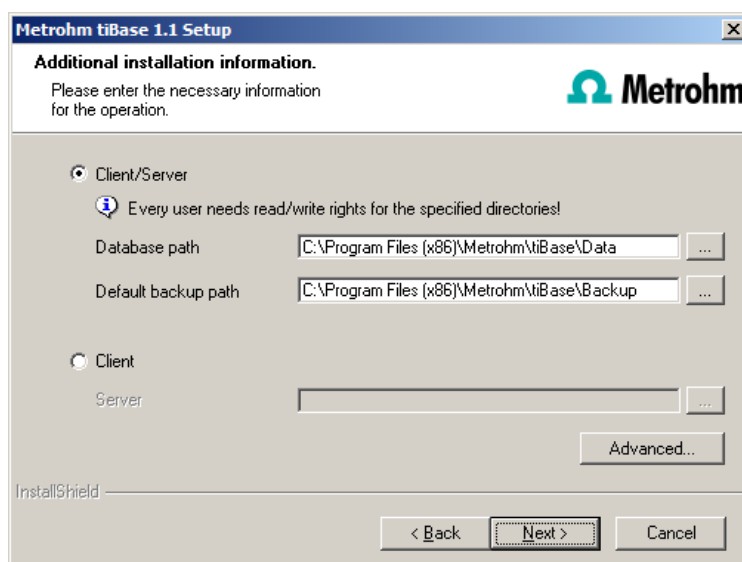
- 4 Enter the license code for **tiBase multi** and click on **[Next]**.




- 5 Now confirm the target folder for the **tiBase** installation with **[Next]** or select a different target folder with **[Browse...]**.



- 6 The dialog window **Additional installation information** appears where you can select whether you want to install a **client** or the **server**:



The option **Client/Server** installs the client and the database server on your computer. Select this option if your computer will be used as server.

With **Client**, only the **client** will be installed and you have to select the database server (has to be installed in advance!), to which you want to connect, with . The network server name or the IP address are accepted.

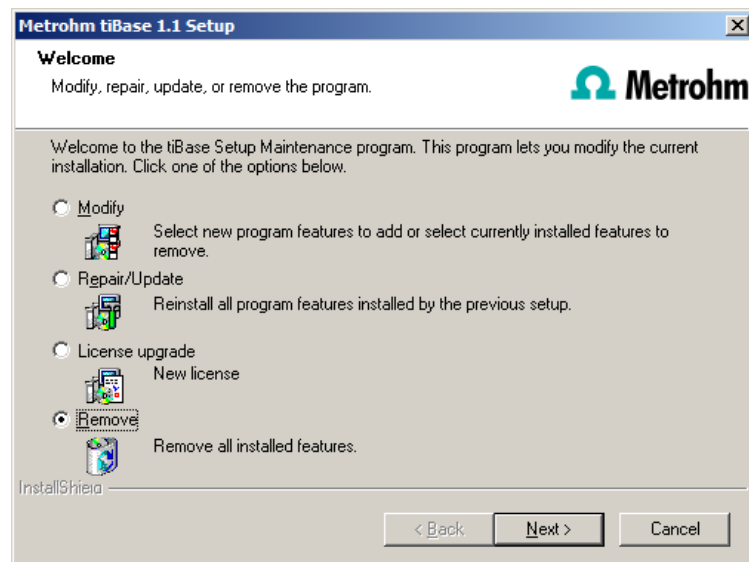
With the button **[Advanced...]** the ports **tiBase** uses to communicate with the database and administration server can be modified. If the ports are already used, an appropriate error message will appear. Ask your system administrator for more information about this. Continue with **[Next]**.

- 7 All further installation steps correspond to those of the single workplace installation on from **point 7**.

4 Modifying / repairing / removing the installation and upgrading the license

In order to carry out modifications on the current **tiBase** installation, start the file **setup.exe** on the installation CD or click under:

- Windows XP and older - **Control Panel ► Software**
 - Windows Vista / Windows 7 - **Control Panel ► Programs and Features**
- on **Metrohm tiBase**. Then select **Change/Remove**:



Modify

With this option you can change the paths to the database and backup files and set the ports which **tiBase** uses for communication. With the **tiBase multi** version you can additionally change the path to the database server.

If the database path is changed, the existing databases are automatically copied to the new location.

Repair/Update

With this option you can **repair** an existing defective installation or **update** an older installation.

■ Repairing the installation

In case of a defective **tiBase** installation because e.g. a DLL file is missing or a program file has been deleted by mistake, **tiBase** can be repaired with this option.

■ Updating the installation

In case an older version of **tiBase** is installed, it will be updated to the new version of **tiBase**.



Caution

During updating older **tiBase** versions the databases will be converted to the new version. Depending on the size of the database, this can take some time. For each database a progress bar is displayed which informs about the status of the conversion.

The computer or Windows must not be restarted or shut down as long as the conversion is running!

License upgrade

A direct upgrade of your current installation to a **tiBase** version with additional features is possible:

- **tiBase full** to
tiBase multi

In order to do this, enter your new license code in the next dialog window.

Remove

This option removes your **tiBase** installation. Data which has been generated after the installation (e.g. database entries, log files, exported data etc.) will remain on your hard disk.

5 Adding additional licenses with Windows Vista or newer

General

Since Windows Vista, Microsoft has introduced the UAC (User Account Control), which permits running tasks either as non-administrator or as administrator (without changes of user, switching off or similar).

<http://technet.microsoft.com/en-us/library/cc709691%28WS.10%29.aspx>

<http://technet.microsoft.com/en-us/magazine/2007.06.uac.aspx>

This function can, however, cause difficulties with client-server installations of **tiBase**.

Problem description

One would like to add additional licenses for the program; the license code for an additional 5 licenses, for example, is added (on the server) in the program part **Configuration** in the dialog window **Program administration** (accessible via menu item **Tools ► Program administration...**, tab **Licenses**).

The file **license.mlic**, which contains the standard license code and the additional license codes, is stored in the **bin** directory of the program installation (**C:\Program Files\Metrohm\tiBase\bin**).

If one adds the 5 licenses and then looks at this file **license.mlic**, only the standard license code will be listed (for 3 licenses).

If one highlights the file **license.mlic** and presses **Compatibility files** in the bar, then one will arrive in the directory **C:\Users\'User\'AppData\Local\VirtualStore\Program Files\Metrohm\tiBase\bin** ('User' being the abbreviation (UID) for the user logged in on the operating system). The file **license.mlic** with the license codes for the standard licenses and the 5 newly added licenses is to be found here, i.e. the additional licenses are stored in the **VirtualStore** only for the Windows user who was logged in on the PC at the time the additional licenses were added.

On the server, the program recognizes all of the licenses; the operating system adds the file **license.mlic** from the directory **C:\Users\'User\'AppData\Local\VirtualStore\Program Files\tiBase\bin** to the detail list of the directory **C:\Program Files\Metrohm\tiBase\bin**.

For the client-server functionality of the database server, however, the file **license.mlic** in the directory **C:\Program Files\Metrohm\tiBase\bin** is relevant, and here only the basic license is listed. Therefore, problems are to be

anticipated when adding additional clients (more than the 3 clients present in the default settings).

Remedy

■ For new installations

- To enter additional licenses, the program must be started as administrator (position the mouse on the Program icon and click the right mouse button – select **Run as administrator** there).
- If one then adds the license code for additional licenses in the usual way, then the file **license.mlic** in the directory **C:\Program Files\Metrohm\tiBase\bin** will contain both license codes.

■ For existing installations

- First of all, the file **license.mlic** in the directory **C:\Users\‘User’\AppData\Local\VirtualStore\Program Files\Metrohm\tiBase\bin** must be deleted.

This file must not be present in the **VirtualStore** of any user – a check must be made to make sure of this, and any such files which may be found must be deleted.

- Afterwards, the program must be started as administrator (position the mouse on the Program icon and click the right mouse button – select **Run as administrator**).

If one then adds the license code for additional licenses in the usual way, then the file **license.mlic** in the directory **C:\Program Files\Metrohm\tiBase\bin** will contain both license codes.

6 User rights for tiBase

In order that the logged in user be able to access all functions with **tiBase**, the windows system administrator must ensure that the permissions are set for the directories as listed below:

Directory	Permission	Group name or user name
Database directory Directory where the databases will be saved (...Data)	Modify	SYSTEM User*
Backup directory Directory where the backups will be stored (...Backup)	Modify	User*
%ALLUSERSPROFILE%\Application Data\Metrohm (Windows 2000, Windows XP)**	Modify	User*
%PROGRAMDATA%\Metrohm (Windows Vista, Windows 7) **	Modify	User*
Export directories Directories where the exported files are to be saved.	Modify	User*
PDF directories Directories where the PDF files are to be saved.	Modify	User*

Directory	Permission	Group name or user name
Desktop	Modify	User*
%PROGRAMFILES%\Metrohm\tiBase	Read Execute	User*

* **User** = name of the user who is logged in

** During installation of **tiBase** the permission **Full Control** is set for the following groups: **SYS-TEM, Administrators, User, Guests, Main users**.